

Bible Quest™

A Classical Approach to Learning God's Word

Old Testament Lesson Sampler

This sampler is taken from the original printed Bible Quest Old Testament book with very little modification. As such, it references pages numbers that are not included.

Copyright Policy

Copyright © 2018 Nathan King

Our duplicating/copying policy for this **Lesson Sampler**:

All rights reserved.

No part of this book may be reproduced, stored in a retrieval system, or transmitted in any form or by any means, electronic, mechanical, photocopying, recording, or otherwise, without the prior written permission of the author, except as provided by U.S.A. copyright law and the specific policies immediately below:

- Maps may be reproduced for home use.

Additional resources are available at: biblequestclassical.com

This is the First Printing of the Third Edition of Bible Quest.

Publications, Resources, and Support

Bible Quest resources to support Biblical discipleship can be found at www.biblequestclassical.com along with an online forum for questions, answers, and ideas, and a blog that addresses issues of interest to Biblical discipleship.

For questions or concerns, contact:
biblequestcbc@gmail.com.

Credits

All honor and glory to God our Father and the Lord Jesus Christ.

Program Design: Nathan King

Editing: Nathan King, Melissa King, Talena Krull

Musical Arrangement: Nathan King, Lindsey Dail, Mary King

Singers: Lindsey Dail, Nathan King, and Zach Deitz




Accompaniment: Lindsey Dail

Maps and Icons: Nathan King

Web page: Phil Krull

Card Artwork is taken from Sweet Publishing,
available at www.sweetpublishing.com.

Table of Contents

Table of Contents	3
Scope and Sequence	4
Welcome to Bible Quest	6
Changes to the Third Edition	6
About the Curriculum	7
Classical Model	7
Using Bible Quest	8
Bible Quest at a Glance	9
Equip Step-by-Step	10
Empower Step-by-Step	12
Expedition Step-by-Step	14
Mentoring with Bible Quest	16
A Note on Discipleship	17
Bible Translations Used	17
Weekly Lessons	19
Appendices	
What We've Learned	103
All WHO? Questions List	104
All WHAT? Questions List	108
All WHEN? Questions List	110
All WHERE? Questions List	111
 Equip Phase	
Equip: Why Memorize?	112
Equip Phase Tools	114
All WHY? Questions List	118
Equip Review Games	119
 Empower Phase	
Empower: What's Next	128
Empower Phase Chart	129
Empower: Exercises	130
Empower: Explorations	136
 Expedition Phase	
Expedition: Epic Journey	150
Expedition Phase Chart	151
Expedition List	152
Methods for Sharing	153
Timeline	
Big Bible Story Song	154
Bible Quest Time Seals	155
Timeline Poster	156
Maps	
OT Map 1—The Pre-Flood Earth	157
OT Map 2—The Fertile Crescent	158
OT Map 3—Egypt and Sinai Peninsula	159
OT Map 4—Canaan	160
OT Map 5—Divided Kingdom	161
OT Map 6—Ancient Empires	162

Simplified Scope and Sequence

Week	Theme	WHO?
1	Creation	God
2	The Garden of Eden	Adam and Eve
3	The Fall of Man	The Serpent
4	Noah and the Flood	Noah
5	Tower of Babel	Noah's Descen-
6	Job	Job
7	Abraham	Abraham
8	Isaac	Isaac
9	Jacob	Jacob
10	Joseph	Joseph
11	Slavery in Egypt	Pharaoh
12	The Exodus	Moses
13	God gives the Law	Aaron
14	Desert Wandering	Joshua and Caleb
15	Promised Land	Joshua
16	Deborah	Deborah
17	Gideon	Gideon
18	Samson	Samson
19	Ruth	Ruth
20	Samuel	Samuel

Week	Theme	WHO?
21	Saul	Saul
22	David	David
23	Solomon	Solomon
24	Israel Divides into 2 Kingdoms	Rehoboam and Jeroboam
25	Elijah and Elisha	Elijah
26	Jonah	Jonah
27	Isaiah	Isaiah
28	Israel falls to Assyria	Assyria
29	Hezekiah	Hezekiah
30	Josiah	Josiah
31	Jeremiah and Ezekiel	Jeremiah and Ezekiel
32	Judah Falls to Babylon	Babylon
33	Daniel and the Exile	Daniel
34	Shadrach, Meshach, and Abednego	Shadrach, Meshach, and Abednego
35	King Nebuchadnezzar	King Nebuchadnezzar
36	Jews Return	Cyrus
37	The Temple Rebuilt	Ezra
38	Esther and Xerxes	Esther
39	The Wall Rebuilt	Nehemiah
40	Malachi	Malachi

Welcome to Bible Quest™!

We are glad that you have decided to join the Bible Quest community! We believe that you are embarking on a journey of discipleship in the lives of your kids that may look different from other programs you've seen. Bible Quest is different both in its intent *and* its approach.

First, Bible Quest is a program that **equips parents and mentors** to teach students how to acquire Biblical Truth. In other words, parents and other caring mentors will have the tools they need not only to instruct their students in the Word of God, but to **teach their students how to learn God's Word** on their own for the rest of their lives.

Second, Bible Quest does not aim to help students 'discover' knowledge, understanding, or wisdom. This is a concept popular in Western culture: that a student should discover truth. This stands in direct opposition to the idea of **revealed** foundational truth. The difference between a student 'discovering' knowledge and a student learning revelation is one of foundation: the discovery method relies on human intellect and reasoning (the student's) to help the student 'grasp' a concept. Accepting revelation, on the other hand, relies on disclosure of truth from authority (ultimately God's Word) and mastery of that information. While human beings can certainly reason and gain knowledge through experience, God's ways are higher than our ways and His thoughts than our thoughts (Isaiah 55:8-9). Thus, we believe a student's Biblical learning should begin with **revealed knowledge**.

Bible Quest seeks to train students how to learn while giving them vital pieces of information that are related together in their proper places. This information given through revelation is **knowledge**, and it is memorized. Once the student has knowledge, they must

learn to use knowledge rightly. The next phase in their journey is to connect the 'mental pegs' of knowledge that they've already memorized into a larger, cohesive picture, resulting in deeper **understanding**. Because they already have the facts at their ready recall, their comprehension of the material will be deeper and founded on God's Word rather than their own opinions, feelings, or misunderstandings. A student with solid information that is connected together rightly will have the tools to teach others the truth or refute error. This is the final goal: to help parents and mentors teach the minds of their students so well that they become effective, lifelong teachers and world influencers for the sake of Christ. A student with understanding can be given intentional opportunities and guidance over time to develop the final piece: **wisdom**.

The intent and approach of Bible Quest are purposely different from many other methods of teaching Scripture. However, we pray that it is not only effective in teaching the Bible, but also in training students how to learn God's Word for the rest of their lives!

Changes to the Third Edition

Past users of Bible Quest will notice several changes to this third edition of the program.

- Areas that touch on understanding and wisdom have been expanded.
- The verse songs that answer the WHAT question each week have been rerecorded.
- The maps have been updated and reformatted to a simpler style.
- The timeline has been reformatted and included inside this book.

About the Curriculum

Overall, Bible Quest has **80 weeks** of core Biblical content that will be covered by students in a two-year cycle, one year for the Old Testament and one year for the New Testament. Each week's material consists of an **Equip** Phase, an **Empower** Phase, and an **Expedition** Phase. This is a simple, easily understood vision that frees teachers to do effective discipleship, because each phase is an important, intentional part of the Bible Quest model.

Classical Model

The Bible Quest system is based on the *classical model* of education, which leverages the process of learning that every person engages in whenever they learn **any subject**. This process is divided into three stages: *Knowledge*, *Understanding*, and *Wisdom*, corresponding to the *grammar*, *dialectic*, and *rhetoric* stages of the classical model Trivium. For more information on the classical model, please visit our website.

The page to the right illustrates the general plan of Bible Quest outlined in each weekly lesson. The phases of the Bible Quest program are shown below the 'Weekly Lessons' diagram. The plan begins with the **Equip** Phase (knowledge), moves to the **Empower** Phase (understanding), and ends with the **Expedition** Phase (wisdom). Step-by-step instructions for phases are provided in the material.

On the first day of a Bible Quest week, parents and mentors begin with the **Equip Phase** for all of their students. After about 15 minutes of memorizing 'Who' and 'What', the youngest students (roughly 5 years of age and younger) can be excused. The rest of the material is then presented. Youngsters up to 7 or 8 years of age may

be dismissed after the **Equip** Phase is complete.

Older students are now ready for the **Empower Phase**. Parents and mentors may choose an **Exploration** to dig deeper into the Word and increase understanding. Explorations may take extra time, depending on student aptitude and the method chosen. Teachers should also explain and model how to do one of the **Exercises** and challenge their students to practice it 15 to 20 minutes daily throughout the week to increase their skill level and comprehension.

Students roughly 12 years old or older can work through the 'Deeper Questions' material in the **Expedition** section. This material can be used for discussion or as a journaling opportunity (both Explorations), or they can be used as a springboard to begin an **Expedition Phase**. Expeditions are coached assignments in which students discuss what they've learned and decide how they'd like to communicate their understanding to others. It is best practice to assign an Expedition at the end of a week of **Equip** and **Empower** activities, because it is at that time that the student has had the opportunity to gain a little knowledge and understanding to apply to the task.

At the end of the week, parents and mentors should consider having a recitation for their students. Ideally, recitations include all memorized material from the **Equip** Phase, a demonstration of the week's Exercise, and perhaps even a recap discussion from the week's Exploration.

Each year's material is divided into forty weeks, leaving one week a month (52 weeks in a year minus 12 equals 40) for weeks set aside for review games, celebrations, or other activities.

Bible Quest at a Glance

WEEKLY LESSONS

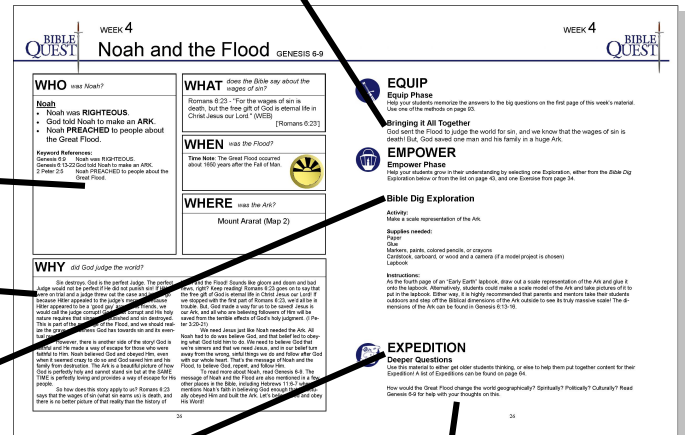
Each week's material provides memorizable content for the **Equip** Phase, as well as other teacher helps, on the first page, plus instruction on what to do on the second page.

Equip Phase content, to memorize!

WHY? Section, to help parents answer tough questions or strike up family conversation!

A specific 'Bible Dig' activity is listed for each week as an **Empower** Phase option.

'Bringing It All Together', to make clear connections between the elements in the **Equip** Phase.



The **Expedition** Phase material includes 'Deeper Questions' to help drive further thinking for advanced students.

Full lesson flow for the week. Use the phases that your students need for their age and aptitude.



EQUIP PHASE

- 30 minutes on the first day of the week.
- 15 minutes daily for the rest of the week.
- Introduce and drill the memory work for each week.
- Equip Tools and Methods can be found on page 114.
- Follow the step-by-step process on page 10.



EMPOWER PHASE

- 40-60 minutes the first day.
- 15-20 minutes daily for the rest of the week.
- Choose an Exploration and an Exercise.
- Follow the step-by-step process on page 12.

EXPLORATIONS

- 20-40 min. on the first day of the week for an Exploration.
- Either use the *Biblical Dig* given each week, or choose one of the Explorations listed on page 136.

EXERCISES

- 20 min. on the first day of the week to model the Exercise.
- 15 min. daily for the rest of the week.
- Choose an Exercise from the list on page 130.



EXPEDITION PHASE

- 1+ weeks, 30 minutes per day.
- Choose and complete an Expedition on page 152.
- Follow the step-by-step process on page 14.



Equip Step-by-Step

While this preparation guide gives specific, step-by-step instructions, Bible Quest has many more options available for parents and mentors to individualize and maximize discipleship with their students. Preparation may vary if other options or methods are employed to help students memorize.

For a more in-depth look at what the **Equip** Phase is all about, turn to page 112.

STEP 1: Read the week's lesson

To begin your preparation, first read over the material on the current week's page (weekly lessons begin on page 19). The answers to the four basic questions will be the material that you will have your student memorize. The most important questions are the "Who?" and the "What?" so if you feel overwhelmed, start with those two. Bible Quest is designed to be revisited more than once to ensure total mastery, so more information can be added when your student goes over it again later.

Remember, the "Why?" section is for the mentor, to help them in answering any questions that come up and is not intended to be taught directly to the student. The 'Bringing it All Together' section on the second page of each week's material can help you understand how all of the material fits together.

STEP 2: Rehearse the Equip Phase

Be sure that you are prepared to teach each part of the **Equip** Phase.

- **Listen to the "WHAT?" (Verse Song)**
Listen to the Bible Quest verse song for the current week. Each song is designed to help you know how to sing each verse according to the melody given. Most of the songs will be familiar tunes. This is intentional, so that even young children can easily pick them up and retain them.

- **Look at the "WHO?"**
All of the key word statements about the "Who?" are backed up with specific Scripture. Additionally, there are general Scripture passages for each week. Ideally, parents and mentors could read these to better understand the context of the person or people they will be talking about, but this is not necessary for beginners or younger students that will not be using the **Empower** Phase. If students will be using the **Empower** Phase, having parents and mentors read these passages is strongly encouraged.
- **Study the "WHERE?" (Map)**
Familiarize yourself with the map for the week. The maps can be found in the back of this book, starting on page 157, and may be reproduced for personal use. Be aware of where the location for the week is and how that location relates to the territories around it geographically.
- **Take note of "WHEN?" (Timeline)**
Look at the historical time frame for the week's material, answered by the "When?" question. The Big Bible Story Song (found on page 22) corresponds with the Bible Quest timeline on the inside front cover. Be aware of when the week's material took place in relation to other points on the timeline. The "Time Note" for each week's "When?" is optional, providing extra information for more advanced students. The primary goal for younger students and beginners should simply be to know approximately when the events of the week occurred and be able to point to that area on the timeline or identify when they occurred in the Big Bible Story Song.

STEP 3: Memorize the “WHAT?”

Ask the question prompt above the “What?” (the Bible verse for the week), then play the song for your student. If you like, you can add actions to the song (these are totally up to you, but they are very helpful to kids and beginners!). Alternatively, more advanced or older students can help make the actions to help them remember!

Repeat the song over and over until the student can recite (or sing) it when you ask the prompt question (the “What does the Bible say about...” question given above the verse). Seven times is a good target number, but more is even better.

STEP 4: Memorize the “WHO?”

Teach the student the “Who?” sentences verbatim. You may choose to use actions for those as well, or you may want to show them one of the cards from the appropriate Bible Quest Review Card Game.

Each sentence has key words that are in bold. One way to use these is to say the whole sentence without one of the key words. For instance, one sentence might be, “God is Father, Son, and... what?” The student would answer “Holy Spirit!” Do not do this exercise until the student has had a chance to hear the sentences a few times, first! Many of the sentences will be difficult for beginners to answer if more than one key word is removed at a time, but older students may find the challenge fun.

STEP 5: Memorize the “WHERE?”

Show the student the “Where?” on the appropriate map in the back of this book. Ask the prompt question a few times and have the student point to the location until they have it. It is also helpful to show where the location is on a world map or globe for context.

STEP 6: Memorize the “WHEN?”

Sing the Big Bible Story Song with your student. Make up actions to the song if you like, or feel free to use the ones from our website. Tell your student when this week’s material takes place in the song, or have them memorize the time note.

STEP 7: Review

Finally, review the material over and over! Make trivia games, review map locations, and play Bible Quest songs or sing the songs yourself many, many times so that the student (and everyone else around you!) MASTERS the information! If you are leading a group and parents are not in the classroom with you, help them to know how to review the material at home. Review resources can be found in the form of all memorized content in list format starting on page 104, and in review games starting on page 119.

Appendices with the lists of all of the **Equip** Phase content can be found starting on page 101, and timeline content can be found starting on page 154. Maps begin on page 157.

If you need some help getting started with Bible Quest, we have several introductory videos and resources on our website!

Creation

GENESIS 1

WHO *is God?*

God

- **GOD** is **FATHER, SON, and HOLY SPIRIT**.
- God **CREATED** the universe.
- **JESUS** and the **HOLY SPIRIT** were with God in the **BEGINNING**.

Keyword References:

Philippians 1:2, Titus 2:13, Acts 5:3-4

GOD is FATHER, SON, and HOLY SPIRIT.

John 1:1-3

God **CREATED** the universe.

John 1:1-3, Genesis 1:1-2

JESUS and the HOLY SPIRIT were with God in the **BEGINNING**.

WHAT *does the Bible say about the creation of the world?*

Genesis 1:1 - "In the beginning, God created the heavens and the earth." (WEB)
["Row, Row, Row Your Boat"]

WHEN *was the world created?*

Time Note: God created everything in the Beginning.



WHERE *is creation?*

CREATION IS EVERYWHERE!

WHY *did God create the universe?*

Why did God create the universe? Some people think that it is because God needs relationships with others, so He created us. However, that would mean that God **NEEDS** something: that He isn't perfectly complete as He is. Others think that God created for His enjoyment. While the act of creation was likely satisfying to Him, the real answer is found throughout the Bible. Check out these passages in the Bible:

- Psalm 19:1 - "The heavens declare the glory of God. The expanse shows his handiwork." *God did it for His glory!*
- Exodus 14:31 - "Israel saw the great work which Yahweh did to the Egyptians, and the people feared Yahweh; and they believed in Yahweh, and in his servant Moses." *God did it for His glory!*
- Psalm 23:3 - "He restores my soul. He guides me in the paths of righteousness for his name's sake." *For HIS name's sake!*

God does what He does for His own glory! This might sound selfish, but help your child understand that we are not to be selfish because the right thing to do is worship and honor God... and God does this right thing, too... by honoring Himself!

Here's some more passages to read about God and His Creation:

- Genesis 1:1-31 tells the story of the Creation Week, when God made the cosmos from nothing.
- John 1 tells about the role of Jesus in Creation (including his divine nature) and why God sent him to Earth.
- Romans 1 tells us about God's power shown in His Creation and how that leaves people that don't believe in God without excuse.

Even though the universe is wonderful, it has never been about God's Creation. The Bible begins and ends with only one person: God. It's all about Him.

So Where did God Come From?

This is a common question. In Genesis we find that God existed before everything else (see also John 1:1-3). All of creation came from something, but eventually everything had to come from **SOMETHING**. That something is the God of the Bible. He **MUST** be able to not have an origin! He is self-existent. Otherwise what would be originator that all other things come from?



EQUIP

Equip Phase

Help your students memorize the answers to the big questions on the first page of this week's material. Use one of the methods on page 114.

Bringing it All Together

God existed before all things, and it is through Him that all things were created!



EMPOWER

Empower Phase

Help your students grow in their understanding by selecting one Exploration, either from the *Bible Dig* Exploration below or from the list on page 136, and one Exercise from page 130.

Bible Dig Exploration

Activity:

Build a collage of the Days of Creation.

Supplies needed:

Nature or Science Magazines (old *National Geographic* magazines work well)

Scissors

Glue

Markers or Crayons

Material for a new lapbook (old file folders work great for this)

Instructions:

As the first page of an 'Early Earth' lapbook, make a collage of the various days of Creation in order. Be sure to write "Days of Creation" as a title somewhere on the page! The days of Creation are: Light and Dark, Water and Sky, Plants and Land, Heavenly Bodies (Sun, Moon, Planets, Stars), Fish and Birds, Land Animals and Man, Rest. More descriptions of these days can be found in Genesis 1.



EXPEDITION

Deeper Questions

Use this material to either get older students thinking, or else to help them put together content for their Expedition! A list of Expeditions can be found on page 152.

What does Creation tell us about God? Why is this important? Read Romans 1:17-21 for some good material on this subject. What role did Jesus (the Son) play in Creation? Read John 1 and Genesis 1 for help in answering.

The Garden of Eden

GENESIS 2-3

WHO *were Adam and Eve?*

Adam & Eve

- Adam and Eve were the **FIRST** man and woman.
- They **LIVED** in the Garden of Eden.
- The Serpent **TEMPTED** Eve.
- Man and woman **SINNED** by disobeying God.

Keyword References:

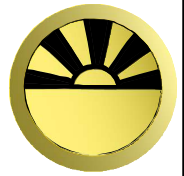
Genesis 2:18-25 Adam and Eve were the **FIRST** man and woman.
 Genesis 2:15 They **LIVED** in the Garden of Eden.
 Genesis 3:1-4 The Serpent **TEMPTED** Eve.
 Genesis 3:6-8 Man and woman **SINNED** by disobeying God.

WHAT *does the Bible say about what creation was like in the beginning?*

Genesis 1:31 - "God saw everything that he had made, and, behold, it was very good. There was evening and there was morning, a sixth day." (WEB)
 ["Jingle Bells" Refrain]

WHEN *did Adam and Eve live in the Garden of Eden?*

Time Note: Adam and Eve lived in the Garden of Eden before the Fall of Man.



WHERE *did Adam and Eve live?*

Garden of Eden (Map 1, page 157)

WHY *does God love us?*

Why does God love us? We are sinful, ungrateful, and rebellious. We hurt other people, we disobey His commandments, and we ignore Him. We have a tendency to ruin everything we touch. Yet, God makes it clear in His Word that He loves people:

- I Timothy 2:4 tells us God "...desires all people to be saved and come to full knowledge of the truth." *He genuinely cares about humanity and their eternal fate.*
- John 3:16—"For God so loved the world, that he gave his one and only Son, that whoever believes in him should not perish, but have eternal life." *This tells us that God loved us so much that he was willing to sacrifice His own Son just to save us!*
- Genesis 1:26-27—"God said, 'Let us make man in our image, after our likeness: and let them have dominion over the fish of the sea, and over the birds of the sky, and over the livestock, and over all the earth, and over every creeping thing that creeps on the earth.' God created man in his own image. In God's image he created him; male and female he created them." *This*

indicates that God made humanity in His own image, and that we are more important than the other creatures of the earth!

I John 4:8 tells us the final clue as to why God loves us: "He who doesn't love doesn't know God, for God is love." *God is love.*

So, why does God love us? **Because He chose to and it is His nature to do so.**

Here's some more passages to look at to understand more about God's love:

I John 4:11—"Beloved, if God loved us in this way, we also ought to love one another." *This shows us that since God loved us we ought to love others, so God's love serves as an example for us to follow.*

Romans 8:38-39—"For I am persuaded, that neither death, nor life, nor angels, nor principalities, nor things present, nor things to come, nor powers, nor height, nor depth, nor any other created thing, will be able to separate us from the love of God, which is in Christ Jesus our Lord." *Romans 8 helps us understand the strength of God's love for us.*



EQUIP

Equip Phase

Help your students memorize the answers to the big questions on the first page of this week's material. Use one of the methods on page 114.

Bringing it All Together

When God created the world, He created everything good. However, He gave man and woman a choice, and they would choose sin.



EMPOWER

Empower Phase

Help your students grow in their understanding by selecting one Exploration, either from the *Bible Dig* Exploration below or from the list on page 136, and one Exercise from page 130.

Bible Dig Exploration

Activity:

Make a map of the Antediluvian World.

Supplies needed:

Bible Quest Map 1, page 157 (for reference)

Paper

Glue

Markers, paints, colored pencils, or crayons

Lapbook

Instructions:

As the second page of an 'Early Earth' lapbook, make a map of the early, pre-flood Earth. Students can make the map separate and glue it to their lapbook, or they can put the map directly on the lapbook page. The Bible Quest Map 1 (page 157) has all the information that is available in the Bible and can be used for reference, but the student will understand the pre-flood (Antediluvian) world better if they look the information up themselves! All information about the pre-flood earth can be found from Genesis 2-7, because the Flood begins in chapter 7. If the student is interested in learning more about the early earth, a lot of great resources can be found at www.creation.com.



EXPEDITION

Deeper Questions

Use this material to either get older students thinking, or else to help them put together content for their Expedition! A list of Expeditions can be found on page 152.

Do you think that there was death before the Fall? Why or why not? Read Genesis 3 and Romans 5:12-14 for some help on answering this. If death existed before the Fall, did sin really have any effect on the world? Why or why not? What are the implications for the truthfulness of the Bible if death existed before the Fall?

The Fall of Man

GENESIS 3

WHO *was the Serpent?*

The Serpent

- The Serpent was **SATAN**.
- God **CURSED** man, woman, and the Serpent because of sin.
- Jesus **FREES** us from the curse.

Keyword References:

Revelation 12:9 The Serpent was SATAN.

Genesis 3:14-19 God CURSED man, woman, and the Serpent because of sin.

Romans 8:2 Jesus FREES us from the curse.

WHAT *does the Bible say about everyone having sinned?*

Romans 3:23 - "...for all have sinned, and fall short of the glory of God..." (WEB) [Original Song]

WHEN *did Adam and Eve leave Eden?*

Time Note: After the Fall of Man Adam and Eve had to leave the Garden of Eden.



WHERE *was the Garden of Eden?*

Garden of Eden (Map 1, page 157)

WHY *is sin a big deal?*

When God created the world, He created it 'very good.' It was the way it was supposed to be. Then, God created people. People could love God out of their own free will, but free will necessitated that humanity be given a choice to love or not to love their Creator. Jesus said, "If you love me, you will obey my commandments." When Adam and Eve disobeyed God by eating the fruit of the Tree of the Knowledge of Good and Evil, something called sin entered the world. So why was sin a big deal?

The Bible tells us that sin is lawlessness and brings death, just as God told Adam and Eve. It is prideful, self-incarnate. By being all about ourselves, we give worship to the false god of 'me.' Sin brought damage and death and perversion into the world and we've been reeling from the effects of our sin ever since. In fact, sin is so severe that God was willing to wipe out His creation to rid the earth of it. Noah's story (next week) illustrates God's real view of sin. Sin is so devastating and destructive and evil that God as the good, perfect, and holy Judge cannot tolerate it or anything contaminated by it. He must give the full penalty to sinners that their crime deserves: death.

The good news is that God sent His own Son Jesus to die and take the penalty for our sins, because the alternative was to condemn every last one of us. Though Adam brought death into the world through disobedience, Jesus through perfect obedience brings life. We need to surrender to God and accept His rescue plan to receive eternal life rather than stay in disobedience and receive eternal death. Then, rather than living in disobedience, we need to obey Him and live in a right relationship with our Creator as we were made to do.

Jesus takes the penalty of our sin away, and God forgives us because Jesus' took what we deserved. That way God can be perfect as Judge and still have perfect love for us.

The following are some passages to help you talk to your kids about why sin is a big deal and what to do about it:

- Romans 3:23; 6:12-13, 23; 10:9-11
- I Thessalonians 5:22
- James 1:13-15, 19-27; 4:1-17



EQUIP

Equip Phase

Help your students memorize the answers to the big questions on the first page of this week's material. Use one of the methods on page 114.

Bringing it All Together

Mankind fell when they chose to sin against God in the Garden. Now, all people are sinners because they are descended from Adam.



EMPOWER

Empower Phase

Help your students grow in their understanding by selecting one Exploration, either from the *Bible Dig* Exploration below or from the list on page 136, and one Exercise from page 130.

Bible Dig Exploration

Activity:

Make a "Results of Sin" Chart

Supplies needed:

Markers, paints, colored pencils, or crayons

Lapbook

Instructions:

As the third page of an "Early Earth" lapbook, make a "Results of Sin" chart. Write the title "The Results of Sin" at the top of the page, along with Romans 3:23 written underneath it. On the left side of the page, make a large box with a list of sins. On the right, make a large box with the results of those sins. For instance, "Stealing" could result in "hurting people, having to pay back what I stole, going to jail" on the right. These sins probably should be universal in nature to stay in theme with the rest of the lapbook (e.g. saying a general "stealing" instead of "the time I stole from my brother"), but thinking through the consequences of sin can be a very good, very personal exercise. The results of sin can therefore be quite personal, as the "having to pay back what I stole" example shows.

At the bottom of the page, write out Romans 6:23 (next week's verse).



EXPEDITION

Deeper Questions

Use this material to either get older students thinking, or else to help them put together content for their Expedition! A list of Expeditions can be found on page 152.

Why do you think Satan fell? Read Revelation 12:7-9, John 8:44, and Isaiah 14:12-14 for some good material on this subject. How did the sin of Lucifer ("Son of the Morning") in Isaiah compare with how Satan tempted Eve?

Noah and the Flood

GENESIS 6-9

WHO *was Noah?*

Noah

- Noah was **RIGHTEOUS**.
- God told Noah to make an **ARK**.
- Noah **PREACHED** to people about the Great Flood.

Keyword References:

Genesis 6:9 Noah was **RIGHTEOUS**.
 Genesis 6:13-22 God told Noah to make an **ARK**.
 2 Peter 2:5 Noah **PREACHED** to people about the Great Flood.

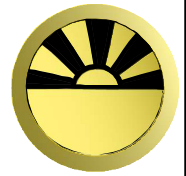
WHAT *does the Bible say about the wages of sin?*

Romans 6:23 - "For the wages of sin is death, but the free gift of God is eternal life in Christ Jesus our Lord." (WEB)

[Original Song]

WHEN *was the Flood?*

Time Note: The Great Flood occurred about 1650 years after the Fall of Man.



WHERE *was the Ark?*

Mount Ararat (Map 2, page 158)

WHY *did God judge the world?*

Sin destroys. God is the perfect Judge. The perfect Judge would not be perfect if He did not punish sin! If Hitler were on trial and a judge threw out the case and let him go because Hitler appealed to the judge's mercy or because Hitler appeared to be a 'good guy' around his friends, we would call the judge corrupt! God is not corrupt and His holy nature requires that sinners be punished and sin destroyed. This is part of the message of the Flood, and we should realize the grave seriousness God has towards sin and its eventual results.

However, there is another side of the story! God is faithful and He made a way of escape for those who were faithful to Him. Noah believed God and obeyed Him, even when it seemed crazy to do so and God saved him and his family from destruction. The Ark is a beautiful picture of how God is perfectly holy and cannot stand sin but at the SAME TIME is perfectly loving and provides a way of escape for His people.

So how does this story apply to us? Romans 6:23 says that the wages of sin (what sin earns us) is death, and there is no better picture of that reality than the history of

Noah and the Flood! Sounds like gloom and doom and bad news, right? Keep reading! Romans 6:23 goes on to say that the free gift of God is eternal life in Christ Jesus our Lord! If we stopped with the first part of Romans 6:23, we'd all be in trouble. But, God made a way for us to be saved! Jesus is our Ark, and all who are believing followers of Him will be saved from the terrible effects of God's holy judgment. (1 Peter 3:20-21)

We need Jesus just like Noah needed the Ark. All Noah had to do was believe God, and that belief led to obeying what God told him to do. We need to believe God that we're sinners and that we need Jesus, and in our belief turn away from the wrong, sinful things we do and follow after God with our whole heart. That's the message of Noah and the Flood, to believe God, repent, and follow Him.

To read more about Noah, read Genesis 6-9. The message of Noah and the Flood are also mentioned in a few other places in the Bible, including Hebrews 11:6-7 where it mentions Noah's faith in believing God enough that he actually obeyed Him and built the Ark. Let's believe God and obey His Word!



EQUIP

Equip Phase

Help your students memorize the answers to the big questions on the first page of this week's material. Use one of the methods on page 114.

Bringing it All Together

God sent the Flood to judge the world for sin, and we know that the wages of sin is death! But, God saved one man and his family in a huge Ark.



EMPOWER

Empower Phase

Help your students grow in their understanding by selecting one Exploration, either from the *Bible Dig* Exploration below or from the list on page 136, and one Exercise from page 130.

Bible Dig Exploration

Activity:

Make a scale representation of the Ark.

Supplies needed:

Paper

Glue

Markers, paints, colored pencils, or crayons

Cardstock, cardboard, or wood and a camera (if a model project is chosen)

Lapbook

Instructions:

As the fourth page of an "Early Earth" lapbook, draw out a scale representation of the Ark and glue it onto the lapbook. Alternatively, students could make a scale model of the Ark and take pictures of it to put in the lapbook. Either way, it is highly recommended that parents and mentors take their students outdoors and step off the Biblical dimensions of the Ark outside to see its truly massive scale! The dimensions of the Ark can be found in Genesis 6:13-16.



EXPEDITION

Deeper Questions

Use this material to either get older students thinking, or else to help them put together content for their Expedition! A list of Expeditions can be found on page 152.

How would the Great Flood change the world geographically? Spiritually? Politically? Culturally? Read Genesis 6-9 for help with your thoughts on this.

Appendices Contents

Appendices

What We've Learned	103
All WHO? Questions List	104
All WHAT? Questions List	108
All WHEN? Questions List	110
All WHERE? Questions List	111

Equip Phase

Equip: Why Memorize?	112
Equip Phase Tools	114
All WHY? Questions List	118
Equip Review Games	119

Empower Phase

Empower: What's Next	128
Empower Phase Chart	129
Empower: Exercises	130
Empower: Explorations	136

Expedition Phase

Expedition: Epic Journey	150
Expedition Phase Chart	151
Expedition List	152
Methods for Sharing	153

Timeline

Big Bible Story Song	154
Bible Quest Time Seals	155
Timeline Poster	156

Maps

OT Map 1—The Pre-Flood Earth	157
OT Map 2—The Fertile Crescent	158
OT Map 3—Egypt and Sinai Peninsula	159
OT Map 4—Canaan	160
OT Map 5—Divided Kingdom	161
OT Map 6—Ancient Empires	162



What We've Learned

When you finish all 40 weeks of the Old Testament edition of Bible Quest, you will know:

- 140 specific information statements about more than 53 people in the Bible.
- 40 Bible verses readily applicable to doctrine and/or real-world life as a believer in Jesus.
- the chronological position of all covered Biblical people or events in the timeline.
- important places that relate to each of the people or events in 26 geographical locations.

That's a great start to a deep understanding of God's Word!

If you completed each of the Bible Dig Explorations, you can bind all of your lapbook pages together into a larger, interactive book for reference or use to help others gain a deeper understanding of the Old Testament!

You've accomplished a lot, but your journey isn't over. The Bible is our ultimate study guide.

Make your own songs!

Build your own Explorations and Exercises!

Launch your own Expeditions!

Continue your quest into the greatest book in the world and never stop!

The next few pages include every question prompt for **Equip** Phase content from the weekly lessons that students should memorize. Use these question lists as quick references for review.



Equip Phase Review Games

Using the Bible Quest Review Card Game for the Old Testament

The *Bible Quest Review Card Game* for the Old Testament can be used as an aid to memorization in the Bible Quest program. The game cards have colored time seal on them, referencing which era each card's events took place in: *The Early Earth*, *The Patriarchs*, *The Exodus*, *Time of Judges*, *Time of Kings*, *Israel's Decline*, *Judah's Decline*, *The Exile*, and *Rebuilding Jerusalem*. **Important:** Unless otherwise noted, all games use ONLY the cards that include pictures of the people on the cards; remove the cards with only a time seal or books of the Bible. The following are some games that teachers can employ with this resource.

Using Review Games as Exercises

As mentioned in the **Empower** Phase step-by-step instructions on page 12, Exercises are inherently repetitious. As such, the Review Games that are listed in this section can also be used as simple Exercises for beginners. After it becomes apparent that the review games are becoming easy for your student, stop using them as exercises and limit them to simple review of memorized knowledge.

List of Games

Bible Charades!	Timeline Shuffle
Bible Quick Draw!	Trivia!
Bible Rummy	Treasure Clues!
Go Fish!	True/False Sticks
Memory!	What Changed?
Musical Cards	Who am I?
Old Maid	Who is this Person?



Equip Phase Review Games

Bible Charades!

Game Application

This classic game variation for two teams promotes familiarity with the content of the Bible Quest cards and works best with students that have some familiarity with the content of the cards. Advanced learners may find this game too easy.

Game Setup

Use the Bible Quest Review Card Game as a quick game of *Charades!* Divide into two teams (or, alternatively, have a non-competitive game without teams).

Game Play

One player draws a card and tries to get their team to guess their person without saying any words out loud or writing anything down. If teams are being played, the game can be timed and if their team guesses their person correctly in the time allotted, they gain a point but either way play passes to the other team. If no teams are being used, the participant that guesses the Bible character correctly is the next actor in *Charades!*

Bible Quick Draw!

Game Application

This classic game variation for two teams promotes familiarity with the content of the Bible Quest Review Card Game and works best with students that have some familiarity with the content of the cards.

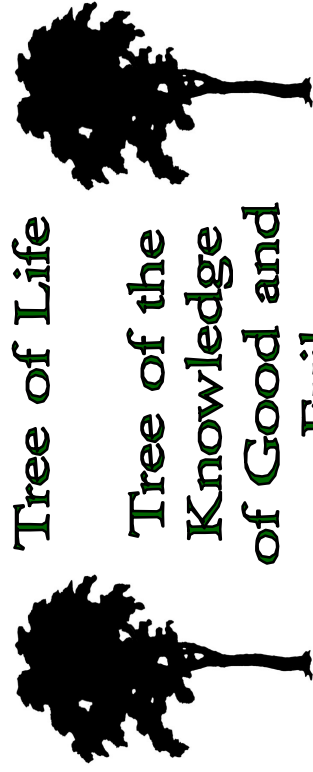
Game Setup

Use the Bible Quest Review Card Game as cards for your own game of *Quick Draw!* Divide into two teams (or, alternatively, have a non-competitive game without teams).

Game Play

One player draws a card and tries to get their team to guess their person by drawing the subject without saying any words out loud or making any gestures other than with their writing utensil. If teams are being played, the game can be timed and if their team guesses their person correctly in the time allotted, they gain a point but either way play passes to the other team. If no teams are being used, the participant that guesses the Bible character correctly is the next actor in *Bible Quick Draw!*

OT Map 1—The Pre-Flood Earth



Tree of Life

Tree of the
Knowledge
of Good and
Evil

EDEN

Cherubim and
Flaming Sword

NOD

● Enoch

Euphrates

Hiddekel

Gihon

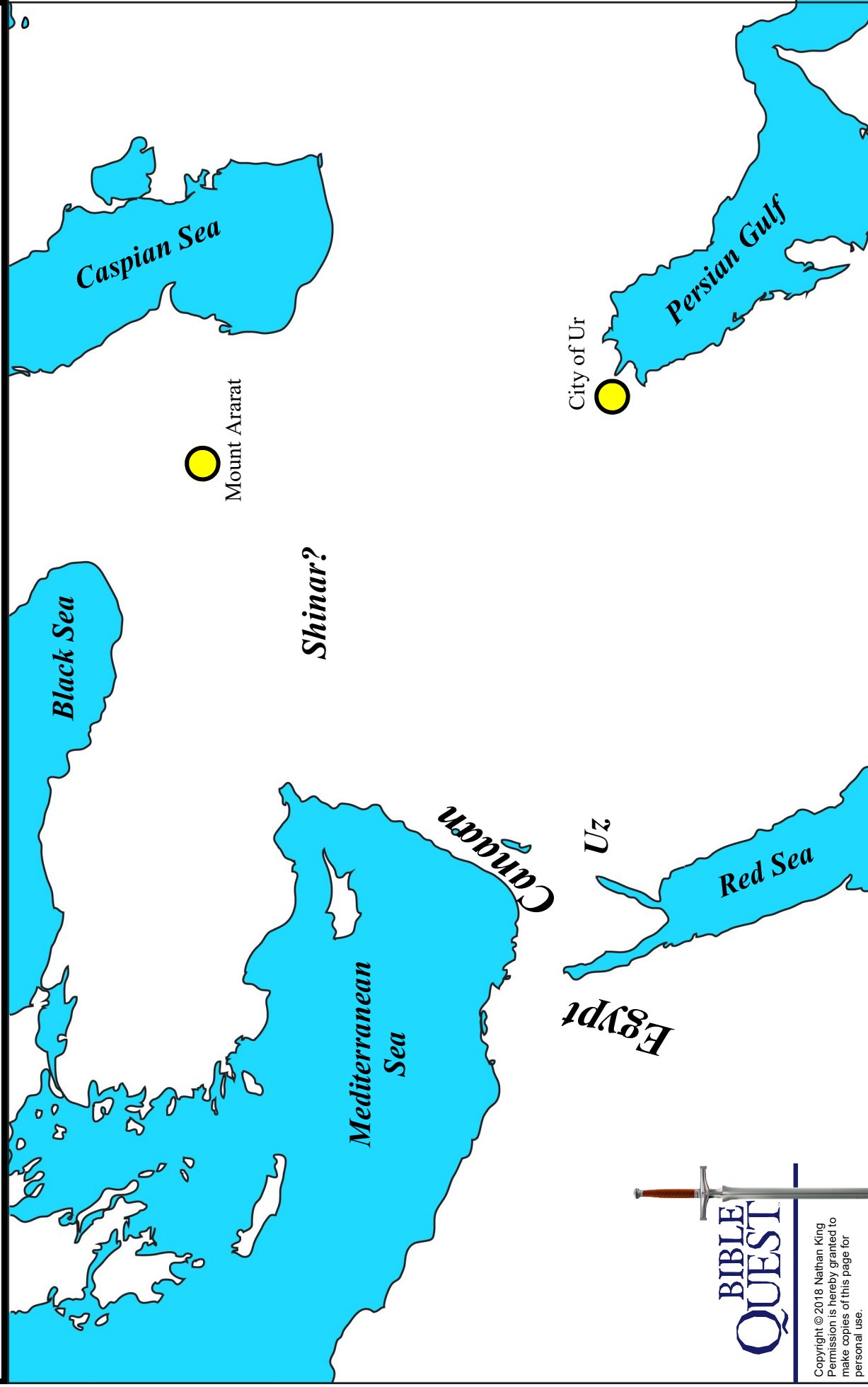
Pishon

Havilah

Cush

Assyria

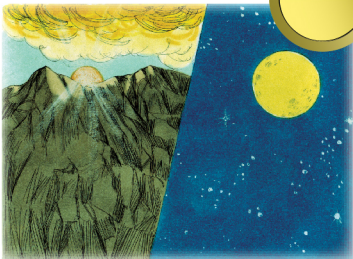
OT Map 2—The Fertile Crescent





Equip Phase Game Cards

Father, Son, and Holy Spirit



- ♦ GOD is FATHER, SON, and HOLY SPIRIT.
- ♦ God CREATED the UNIVERSE.
- ♦ JESUS and the HOLY SPIRIT were with God in the BEGINNING.

Image copyright (c) Sweet Publishing and is available under Creative Commons Share-Alike 3.0 Unported License. Text content, Bible Timeline logo and card concept and layout is copyright (c) 2018 Nathan King. All rights reserved.

Adam & Eve



- ♦ Adam and Eve were the FIRST man and woman.
- ♦ They LIVED in the Garden of EDEN.
- ♦ The Serpent TEMPTED Eve.
- ♦ Man and woman SINNED by disobeying God.

Image copyright (c) Sweet Publishing and is available under Creative Commons Share-Alike 3.0 Unported License. Text content, Bible Timeline logo and card concept and layout is copyright (c) 2018 Nathan King. All rights reserved.

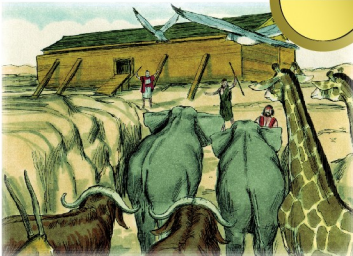
The Serpent



- ♦ The Serpent was SATAN.
- ♦ God CURSED man, woman, and the Serpent because of SIN.
- ♦ Jesus FREES us from the CURSE.

Image copyright (c) Sweet Publishing and is available under Creative Commons Share-Alike 3.0 Unported License. Text content, Bible Timeline logo and card concept and layout is copyright (c) 2018 Nathan King. All rights reserved.

Noah



- ♦ Noah was RIGHTEOUS.
- ♦ God told NOAH to make an ARK.
- ♦ Noah PREACHED to people about the Great FLOOD.

Image copyright (c) Sweet Publishing and is available under Creative Commons Share-Alike 3.0 Unported License. Text content, Bible Timeline logo and card concept and layout is copyright (c) 2018 Nathan King. All rights reserved.

Bible Quest™ Review Card Games

Each deck can be used for more than a dozen games! Cards include the following content:

The Equip Phase memory facts to answer each week's "Who?"

Timeline Seal to correlate each card's chronology with the curriculum and the timeline posters.

Bible Quest™ Timeline Posters

These 4-foot long posters include:

Timeseals to correlate with the Big Bible Story Song and the Bible Quest review card game.

Historical Dates.

Chronological correlation to Ancient Empires (Old Testament) and Roman Emperors (New Testament).

